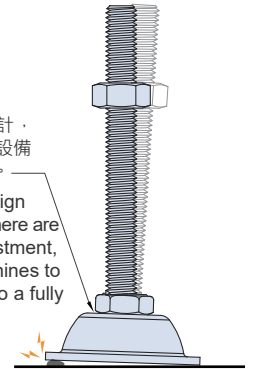
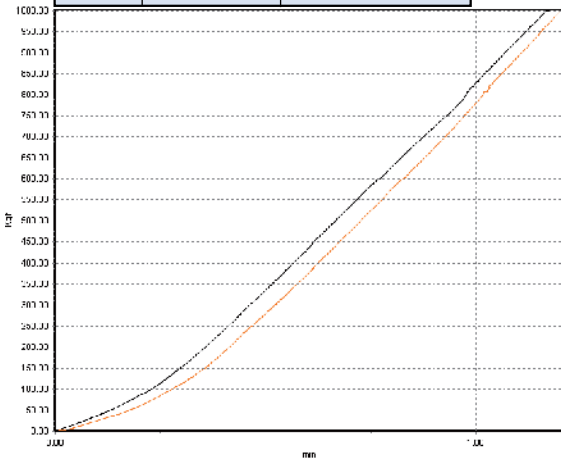


螺桿底部專利圓弧設計，具有4度萬象調整，使設備自動調整至完全水平。

The patented arc design of the screw bottom, there are 4-degree swivel adjustment, which make the machines to automatically adjust to a fully level position.



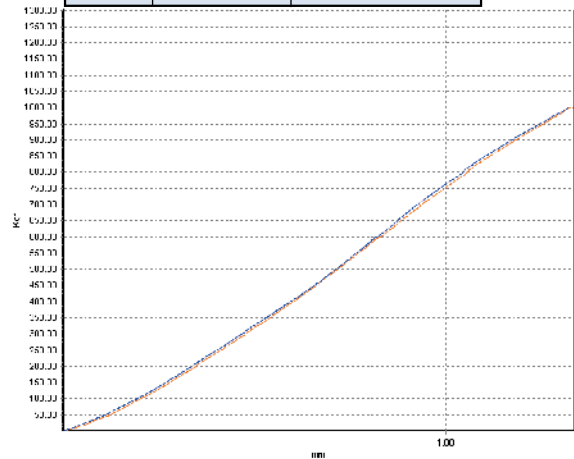
測試結果 RESULT	最大荷重(N) Max. Load	最大位移(mm) Max. Displacement
	1002.06	1.21



M8腳座荷重測試曲線圖

The chart shows the leveling feet load capacity of M8

測試結果 RESULT	最大荷重(N) Max. Load	最大位移(mm) Max. Displacement
	1001.13	1.33



M16腳座荷重測試曲線圖

The chart shows the leveling feet load capacity of M16

材質與表面處理

- 盤座：DK-10合金鋼(SCM)，鍍鋅。
DS-10不銹鋼(SUS304)，震動亮面。
- 螺桿：DK-10合金鋼(SCM)，鍍鋅。
DS-10不銹鋼(SUS304)，電解。

特徵

- 螺桿底部專利圓弧設計，具有4度萬向調整，使設備自動調整至完全水平。
- 防銹(DS系列)、耐腐蝕性、耐磨耗、耐油。

MATERIAL AND FINISH

- Base: DK-10 Steel (SCM), Zinc plated.
DS-10 Stainless steel (SUS304),
Vibration ground.
- Bolt: DK-10 Steel (SCM), Zinc plated.
DS-10 Stainless steel (SUS304),
Electro Polishing.

FEATURES

- The patented arc design of the screw bottom, there are 4-degree swivel adjustment, which make the machines to automatically adjust to a fully level position.
- Resistance to rust (DS Series), corrosion, abrasion and greasiness.

SPECIFICATION:

Unit:mm

產品編號Item No.		尺寸 Dimensions							荷重 Load Capacity (kgf)	重量 Weight (g)
SCM	SUS304	M	L	ØD	H1	H2	H3	W		
DK-1008035A	DS-1008035A	M8*P1.25	35	40	17.8	12.5	6.5	13	130	51
DK-1008050A	DS-1008050A		50							55
DK-1008075A	DS-1008075A		75							61
DK-1010050A	DS-1010050A	M10*P1.5	50	18.8	8	17	190	190	75	
DK-1010075A	DS-1010075A		75						85	
DK-1010100A	DS-1010100A		100						96	
DK-1012035D		M12*P1.75	35	53.5	22.1	15	10	19	390	105
DK-1012040D			40							108
DK-1012075D	DS-1012075D		75							136
DK-1012100D	DS-1012100D	100	151							
DK-1012150D	DS-1012150D	150	181							
DK-1016075H		M16*P2.0	75	73.2	31.7	22	13	24	780	248
DK-1016100H	DS-1016100H		100							289
DK-1016150H	DS-1016150H		150							345
DK-1020100H	DS-1020100H	M20*P2.5	100	33.7	16	30	900	900	900	412
DK-1020150H	DS-1020150H		150							499
DK-1020200H			200							572