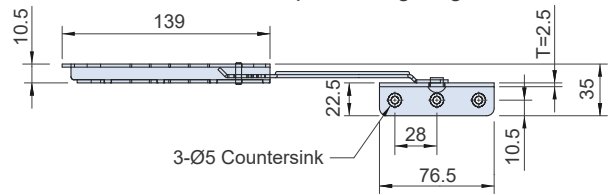


FT-0110



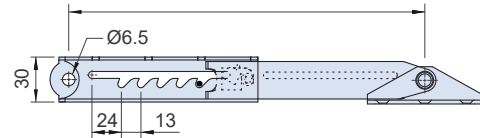
FS-0110 5段式定位
FT-0110 5 positioning stages.



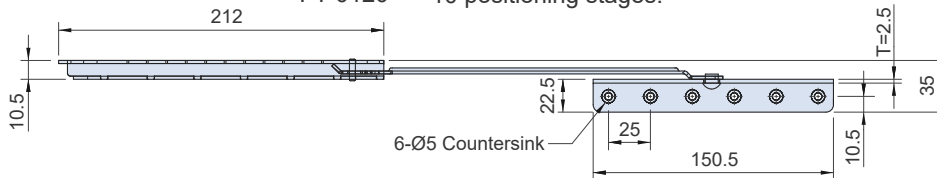
FS-0120



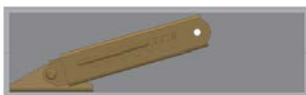
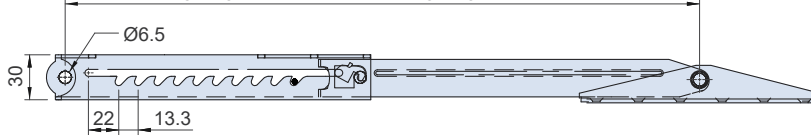
L1: 定點最長 L2: 定點最短 L3: 閉合長
L1: The longest L2: The shortest L3: Closed length
positioning stage positioning stage



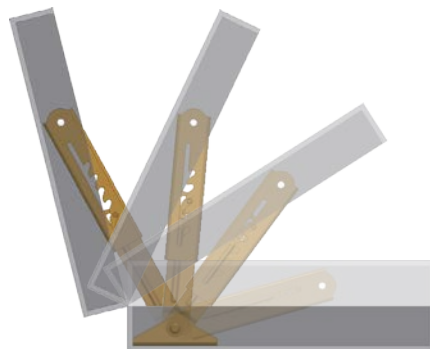
FS-0120 10段式定位
FT-0120 10 positioning stages.



L1: 定點最長 L2: 定點最短 L3: 閉合長
L1: The longest L2: The shortest L3: Closed length
positioning stage positioning stage



箱體關閉側視圖
A schematic side view when shut the box.



開啟時能五段定位或十段定位，關閉時需拉到底才可閉合
Pulls upwards to the end when the cover closes, then it closes downward.



特徵

- 適用開門方式：限上掀固定用。
- 開啟時能五段定位或十段定位，關閉時需拉到底才可閉合，操作簡單。

FEATURES

- Door opening manner: Upward opening.
- Circulating operation procedure, easy to operate. (Open stage by stage → Fully opened → Close) Close only after fully opened.

SPECIFICATION:

Unit:mm

產品編號 Item No.	定位段數 Positioning stages	材質 Material	表面處理 Finish	尺寸 Dimensions			荷重 Load Capacity (kgf)	重量 Weight (g)
				L1	L2	L3		
FT-0110	5	SPCC	五彩 Chromic acid passivated	214	164	140	58	245
FT-0120	10			355	235	213		397
FS-0110	5	SUS304	震動亮面 Vibration ground	214	164	140		245
FS-0120	10			355	235	213		397