

SPECIFICATION

Unit:mm

產品編號 Item No.	荷重 Load Capacity (kgf)	重量 Weight (g)	產品編號	產品編號	荷重 Load Capacity (kgf)	重量 Weight (g)	尺寸 Dimensions				
			Item No	Item No			P	D	M	H	H1
ES-3206055	30	22.6	ET-3206055W	ET-3206055B	25	25	6.3	M4	32	8	
ES-3206064		24.8	ET-3206064W	ET-3206064B		27.2					64
ES-3206076		27.8	ET-3206076W	ET-3206076B		30.2					76
ES-3206088		30.6	ET-3206088W	ET-3206088B		33.2					88
ES-3206100		33.6	ET-3206100W	ET-3206100B		36.2					100
ES-3508055	55	37.8	ET-3508055W	ET-3508055B	50	42.1	8	M5	35	10	
ES-3508088		50.8	ET-3508088W	ET-3508088B		55.2					88
ES-3508100		55.8	ET-3508100W	ET-3508100B		59.9					100
ES-3508120		63.6	ET-3508120W	ET-3508120B		67.8					120
ES-3508136		70.2	ET-3508136W	ET-3508136B		71					136
ES-4010088	75	80.6	ET-4010088W	ET-4010088B	70	90	10	M6	40	12	
ES-4010100		88.4	ET-4010100W	ET-4010100B		97.2					100
ES-4010120		100.4	ET-4010120W	ET-4010120B		109.5					120
ES-4010150		118	ET-4010150W	ET-4010150B		128					150
ES-4010180		136	ET-4010180W	ET-4010180B		146.5					180
ES-4310200		155				200	M5	43			
ES-4310235		179				235					

材質與表面處理

- 不銹鋼(SUS304) · 震動亮面。
- 鐵(1008) · 鍍鉻色及黑色。

MATERIAL AND FINISH

- Stainless steel (SUS304), Vibration ground.
- Steel (1008), Bright chrome plated or Black coating.

特徵

- 實心棒材設計。
- 可搭配下方美觀座。

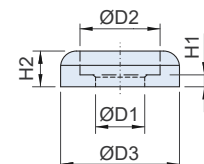
FEATURES

- Solid round-bar handle design.
- Can use with mounting washers.

棒材把手 專用美觀座 Mounting Washers

SUS304

RoHS



SPECIFICATION

Unit:mm

產品編號 Item No		尺寸 Dimensions				
不銹鋼 SUS304	鐵(1008)-黑色 Steel-Black	H1	H2	D1	D2	D3
53206SW	53206TB	1.2	2.5	4.2	6.5	10
53508SW	53508TB	1.3	3	5.2	8.1	12
54010SW	54010TB	1.5	4.5	6.2	10.1	15

材質與表面處理

- 不銹鋼(SUS304) · 震動亮面。
- 鐵(1008) · 黑色。

MATERIAL AND FINISH

- Stainless steel (SUS304), Vibration ground.
- Steel (1008), Black coating.