

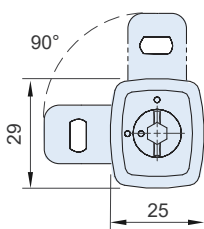
B-011XX



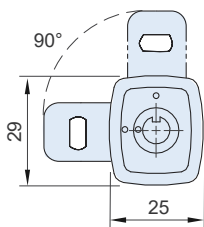
B-012XX



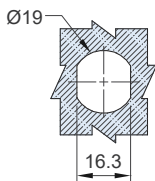
B-010 / B-011



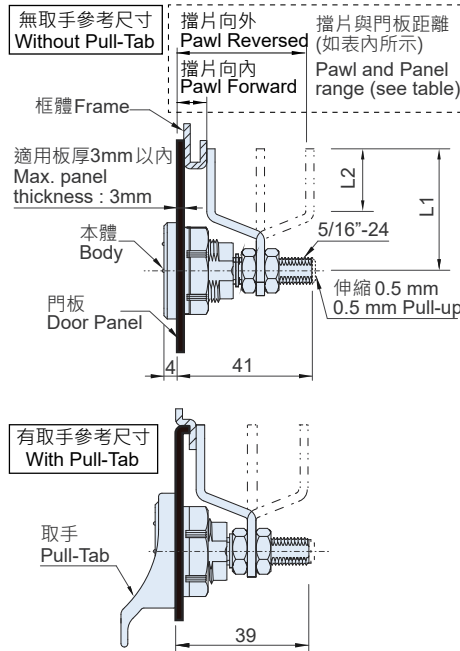
B-012 / B-013



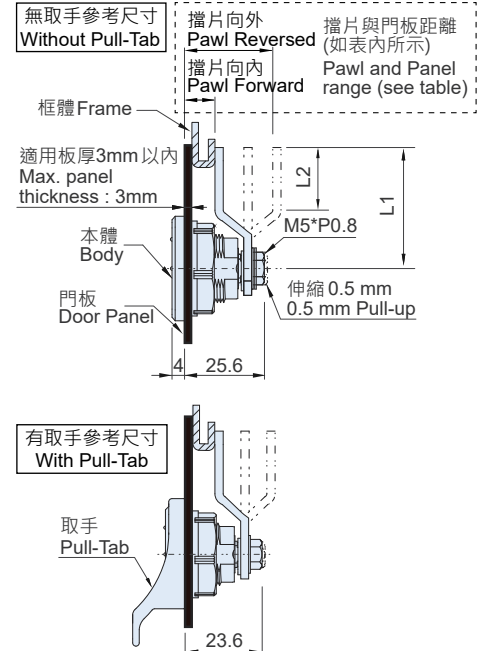
安裝孔開孔尺寸
Opening Size



【長軸型 Long-Shaft Type】



【短軸型 Short-Shaft Type】



SPECIFICATION:

Unit:mm

產品編號 Item No.		軸心 型式 Shaft Type	檔片 型號 Pawl Type	尺寸 Dimensions		檔片與門板距離 Pawl and Panel range		重量 Weight (g)	
六角鎖 Hex-5mm	圓形鎖 Tubular			L1	L2	檔片向內 Pawl Forward	檔片向外 Pawl Reversed		
B-01021	B-01221	長軸 Long Shaft	#21	37	19	19~28	29~38	40.5	
B-01022	B-01222		#22	37	16.5	14~23	34~43	41	
B-01023	B-01223		#23	37	16.5	9~18	39~48	42	
B-01024	B-01224		#24	37			24~33	40	
B-01025	B-01225		#25	25			24~33	37	
B-01026	B-01226		#26	24	13.5		39.5~48.5	41	
B-01027	B-01227		#27	28.5	17		37~45	42	
B-01028	B-01228		#28	42.5	19	2.2~11.2	45.5~54.5	45.6	
B-01036	B-01236		#36	27	17.5		57.5~66.5	46.8	
B-01037	B-01237		#37	42.5			24~33	42	
B-01038	B-01238		#38	57	26.5	14~23	34~43	47	
B-01039	B-01239		#39	57	26.5	9~18	39~48	48	
B-01040	B-01240		#40	57			24~33	46	
B-01041	B-01241		#41	57	29	19~28	29~38	46	
B-01121	B-01321		短軸 Short Shaft	#21	37	19	13.6	23.6	33
B-01122	B-01322			#22	37	16.5	8.6	28.6	33.5
B-01123	B-01323	#23		37	16.5	3.6	33.6	34.5	
B-01124	B-01324	#24		37			18.6	32.5	
B-01125	B-01325	#25		25			18.6	29.5	
B-01126	B-01326	#26		24	13.5		34.1	33.5	
B-01127	B-01327	#27		28.5	17		30.6	34.5	
B-01128	B-01328	#28		42.5	19		40.4	38.1	
B-01136	B-01336	#36		27	17.5		52.1	39.3	
B-01137	B-01337	#37		42.5			18.6	34.5	
B-01138	B-01338	#38		57	26.5	8.6	28.6	39.5	
B-01139	B-01339	#39		57	26.5	3.6	33.6	40.5	
B-01140	B-01340	#40		57			18.6	38.5	
B-01141	B-01341	#41		57	29	13.6	23.6	38.5	

材質與表面處理

- 本體：尼龍(PA66+GF)。
- 軸心：鋅合金·表面鍍鉻。
- 擋片：鐵(SPCC)鍍鋅。

特徵

- 材料符合UL94 HB防火等級。

MATERIAL AND FINISH

- Body: Nylon(PA66+GF).
- Shaft: Zinc alloy, Chrome plated.
- Pawl: Cold-rolled Steel (SPCC), Zinc plated.

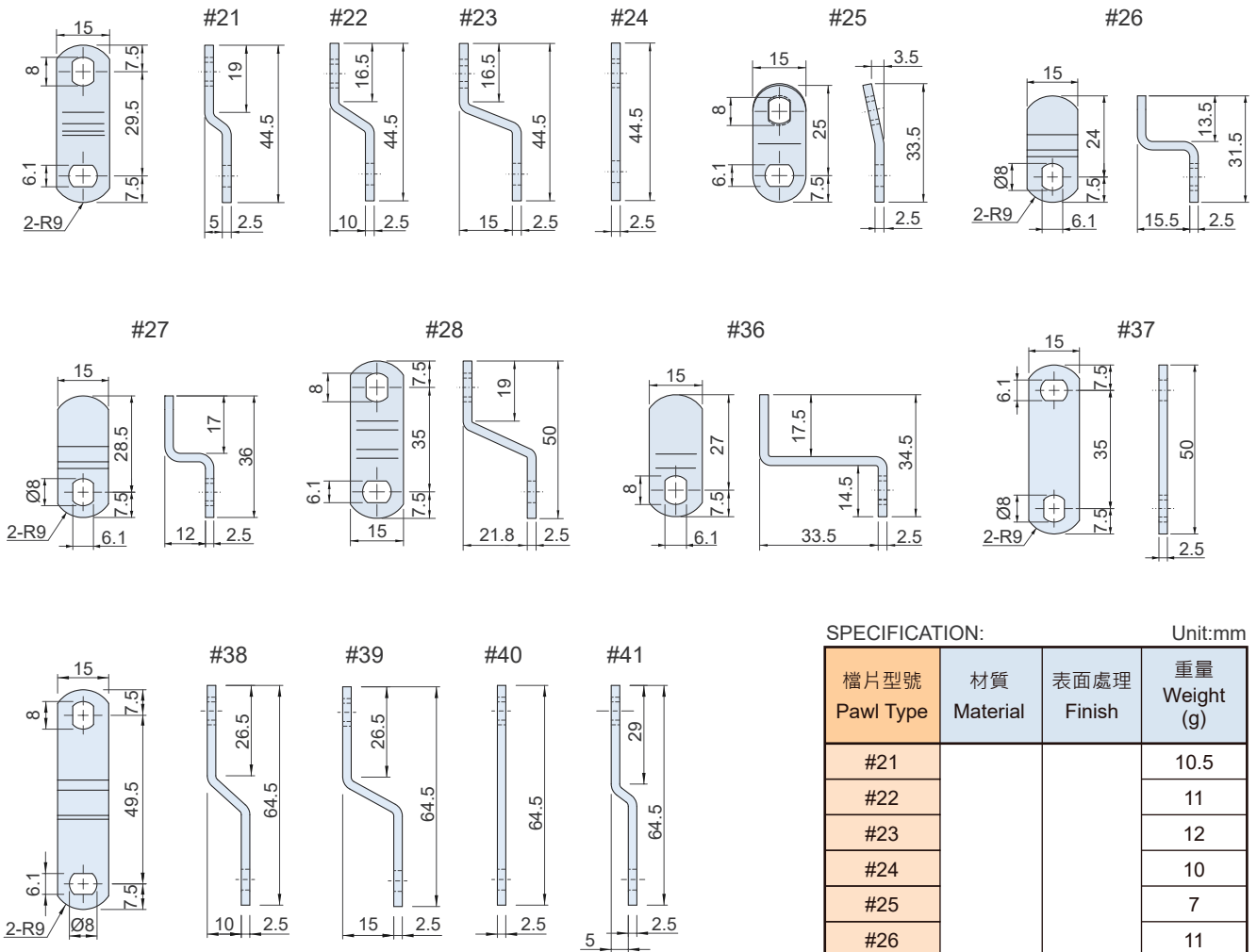
FEATURES

- Use the original raw material compliant with UL94 HB standards.

備註：鑰匙取手需另外選配。安裝取手時，請將檔片與門板距離減少2mm

Remarks : The Lock do not include Key and Pull-Tab. With Pull-Tab, the "Pawl and Panel range" will reduce 2 mm.

B-01 Series 門鎖檔片 *Applicable Pawl*

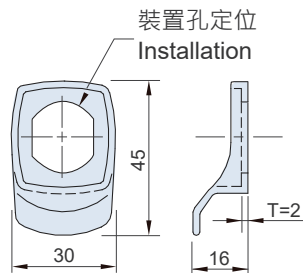


SPECIFICATION:

Unit:mm

檔片型號 Pawl Type	材質 Material	表面處理 Finish	重量 Weight (g)
#21	鐵 SPHC	鍍鋅 Zinc plated	10.5
#22			11
#23			12
#24			10
#25			7
#26			11
#27			12
#28			15.6
#36			16.8
#37			12
#38			17
#39			18
#40			16
#41			16

B-01 Series 選配組件 *Accessory*



SPECIFICATION:

Unit:mm

產品編號 Item No.	品名 Description	材質 Material	重量 Weight(g)
201010Z	圓形鑰匙 Tubular Key	鋅合金 Zinc Alloy	9.5
201009Z	六角鑰匙5mm Hex. Key 5mm	鋅合金 Zinc Alloy	9.5
B-1602	取手 Pull-Tab	尼龍 Nylon (PA66+GF)	4.2

特徵

FEATURES

- B-1602 : 材料符合UL94 HB防火等級。
- B-1602: Use the original raw material compliant with UL94 HB standards.