

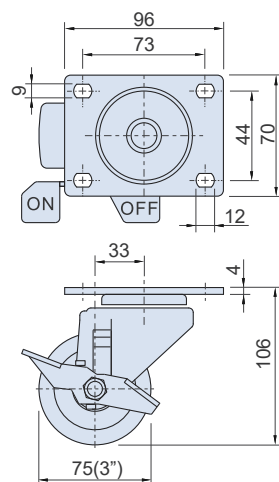
GTU-A3-1



GTU-A3-2



GTU-A3-1 / GTU-A3-2



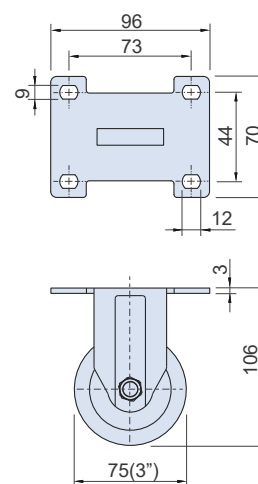
GTU-A3-3



GTU-A3-4



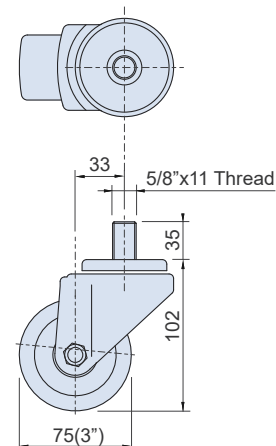
GTU-A3-3



GTU-A3-5



GTU-A3-4 / GTU-A3-5



特徵

- 輪架表面處理鍍鋅。
- 兩側均有防塵輪蓋，可預防細屑侵入及美化外觀等優點。
- 熱塑性聚氨酯輪 TPU輪，屬於熱可塑性聚氨酯樹脂，一般採熱塑性（聚氨酯）射塑成型，耐磨損、靜音，兩側均有防塵輪蓋，可預防細屑侵入及美化外觀等優點，但隨著時間的經過會有水解的情況產生，適用於室內乾燥地板。TPU腳輪可應用於精密儀器設備、自動化設備、各式工作車等用途。

FEATURES

- The housing is zinc plated.
- Special dust-pooof hubs design.
- Thermoplastic Polyurethanes (TPU) has good wear resistance and abrasion. For our TPU wheel, we will add plastic cover for prevent the dust and beautify the appearance. However, for thermoplastic polyurethanes, it will be hydrolyzed as time went by.

SPECIFICATION:

Unit:mm

產品編號 Item No.	輪架材質 Housing Material	輪子材質 Wheel Material	型式 Type	尺寸 Dimensions			荷重 Load Capacity (kgf/pc)	重量 Weight (kg)
				輪徑 Wheel Diameter	輪寬 Wheel Width	迴轉半徑 Radius of gyration		
GTU-A3-1	鐵 Steel	TPU	培林 Bearing	75(3'')	30	75	150	0.76
GTU-A3-2						100		0.85
GTU-A3-3						75		0.51
GTU-A3-4						75		0.63
GTU-A3-5						100		0.72