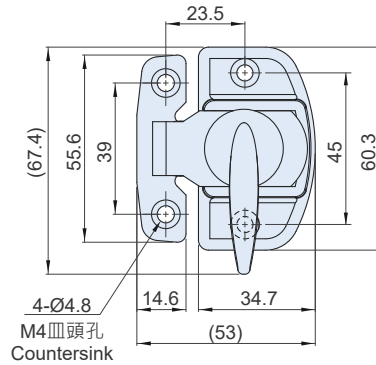
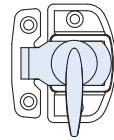


CT-3520-W

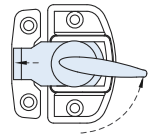
迫緊搭扣 Draw Latch (Spring Loaded Type)



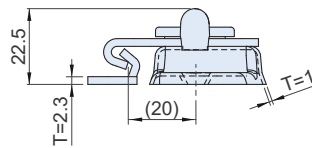
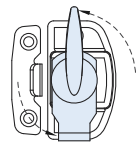
緊固
Tightening



釋放
Loosening



旋開
Unlocking



特徵

- 開啟時，扣勾上移3mm後旋轉90度
- 關閉時，旋轉回正，且迫緊箱蓋不晃動

FEATURES

- When unlocking, buckle hook would automatically move 3mm up, and then turns 90 degrees.
- When locking, buckle hook returns to its original position to tighten the cover.

材質與表面處理

- 本體：SPCC，鍍鉻
- 把手：鋅合金，鍍鉻

MATERIAL AND FINISH

- Body: SPCC, Bright chrome plated.
- Handle: Die-cast Zinc, Bright chrome plated.

SPECIFICATION:

Unit:mm

產品編號 Item No.	材質 Material	表面處理 Finish	引張荷重 Load Capacity (kgf)	重量 Weight(g)
CT-3520-W	SPCC	鍍鉻 Bright chrome	80	74

CS-26 Series
CT-26

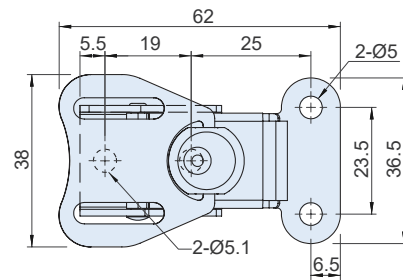
Series

迫緊搭扣 Draw Latch (Spring Loaded Type)

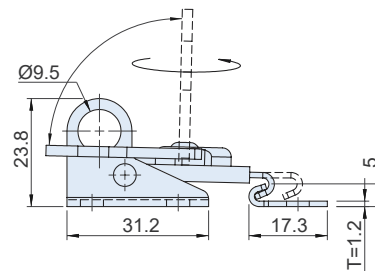
SUS304



CS-26228



CT-26227



特徵與用途

- 順時針旋轉拉緊後，施柄蓋平(閉鎖狀)，不易因振動而鬆開。
- 適用專業儀表、儀器、音響用機箱櫃、檢測儀器箱框。

FEATURES AND APPLICATIONS

- Cover of rotator handle is parallelism after revolving to tense and it doesn't loosen easily at vibration.
- Used for professional instrument, equitment, cabinet of stereo and testing machines.

SPECIFICATION:

Unit:mm

產品編號 Item No.	材質 Material	表面處理 Finish	引張荷重 Load Capacity (kg)	重量 Weight (g)
CS-26228	SUS304	震動亮面 Vibration ground	30	54
CT-26227	SPCC	鍍鋅 Zinc plated		