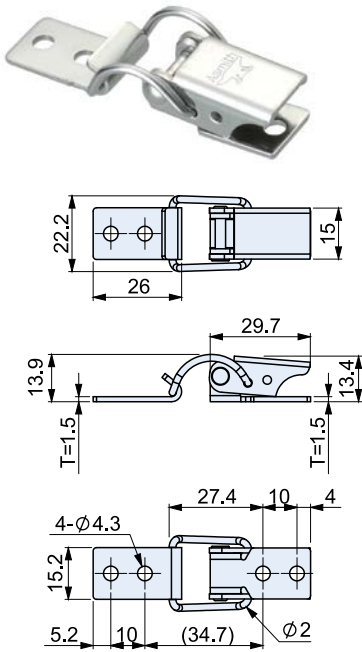
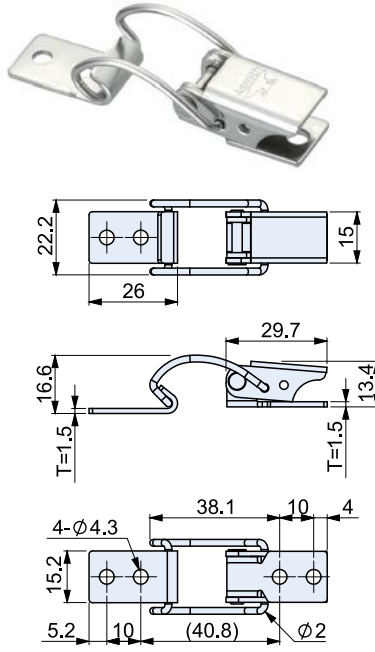


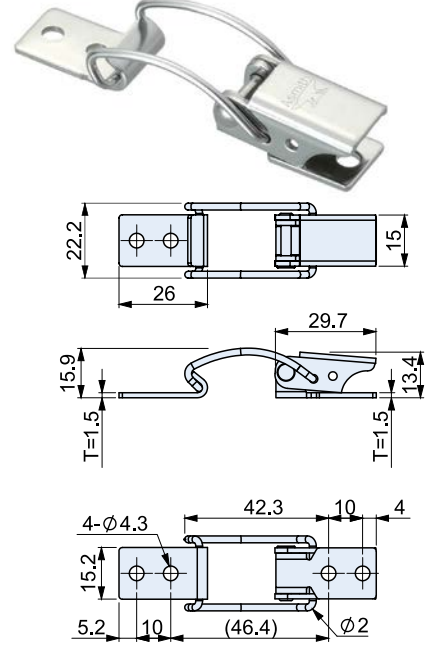
CS-19100
CT-19100



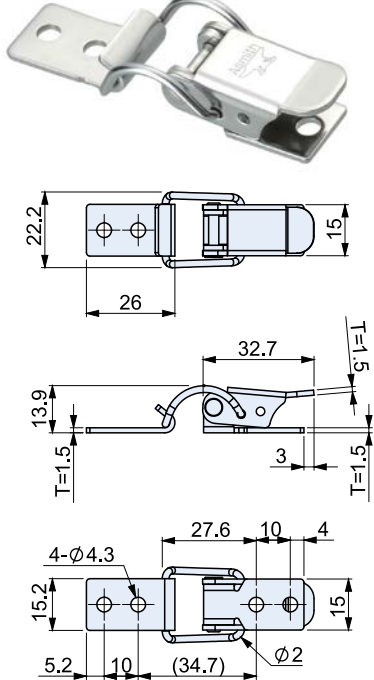
CS-19101
CT-19101



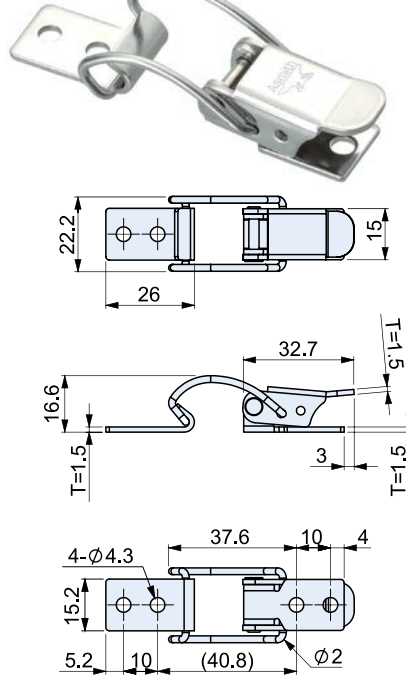
CS-19102
CT-19102



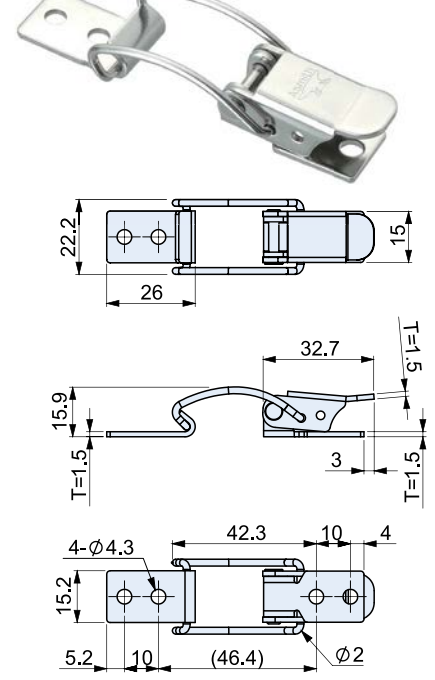
CS-19103
CT-19103



CS-19104
CT-19104



CS-19105
CT-19105



SPECIFICATIONS:

Unit:mm

產品編號 Item No.	材質 Material	表面處理 Finish	引張荷重 Load capacity (kg)	重量 Weight(g)
CS-19100	SUS304	震動亮面 Vibration ground	22	23.5
CS-19101			21	18.6
CS-19102			20	18.6
CS-19103			21	23.4
CS-19104			20	18.5
CS-19105			22	18.5

SPECIFICATIONS:

Unit:mm

產品編號 Item No.	材質 Material	表面處理 Finish	引張荷重 Load capacity (kg)	重量 Weight(g)
CT-19100	SPCC	鍍鋅 Zinc plated	22	22.9
CT-19101				18.2
CT-19102				18.2
CT-19103				22.8
CT-19104				18.1
CT-19105				18.1