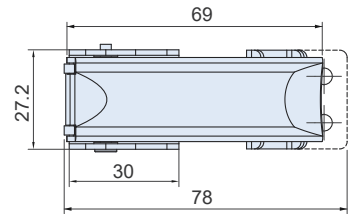
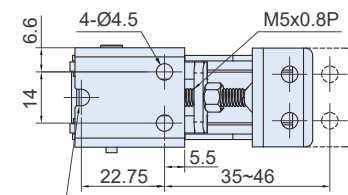
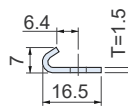
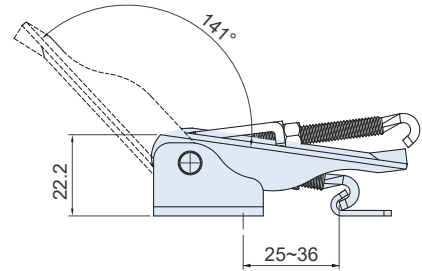
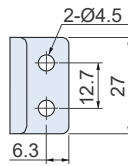


CS-21207  
CT-21207

調整搭扣 Draw Latch (Adjustable Type)



半圓螺絲孔建議用焊接、拉釘或是極低頭螺絲固定  
Half-round screw holes are recommended to be screwed with Welding, Rivet, or Low Head Cap Screws.



特徵

調整鉤能依螺牙正反轉，調整適當鬆緊迫緊物件。

FEATURES

The adjustable latch rod can depend on the spiral tooth to be reversing, to adjust the suitable compression force.

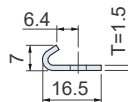
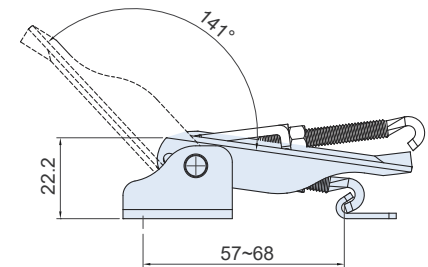
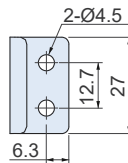
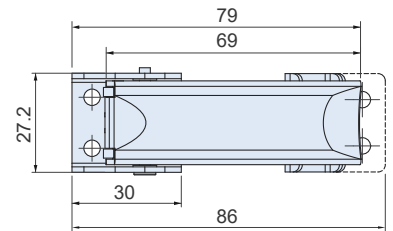
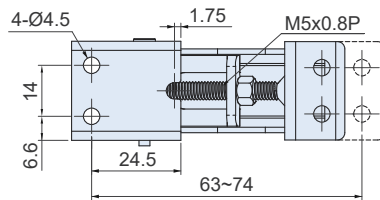
SPECIFICATION:

Unit:mm

產品編號 Item No.	材質 Material	表面處理 Finish	引張荷重 Load Capacity(kgf)	重量 Weight(g)
CS-21207	SUS304	震動亮面 Vibration ground	70	80
CT-21207	SPCC	鍍鋅 Zinc Plated	80	

CS-21217  
CT-21217

調整搭扣 Draw Latch (Adjustable Type)



特徵

調整鉤能依螺牙正反轉，調整適當鬆緊迫緊物件。

FEATURES

The adjustable latch rod can depend on the spiral tooth to be reversing, to adjust the suitable compression force.

SPECIFICATION:

Unit:mm

產品編號 Item No.	材質 Material	表面處理 Finish	引張荷重 Load Capacity(kgf)	重量 Weight(g)
CS-21217	SUS304	震動亮面 Vibration ground	70	80
CT-21217	SPCC	鍍鋅 Zinc Plated	80	