

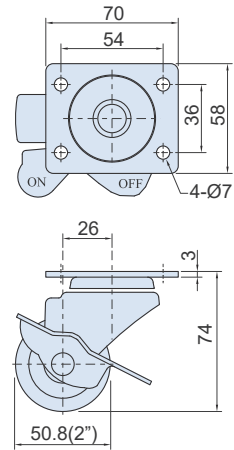
GP-B5-1



GP-B5-2



GP-B5-1 / GP-B5-2



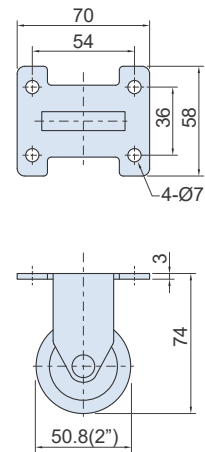
GP-B5-3



GP-B5-4



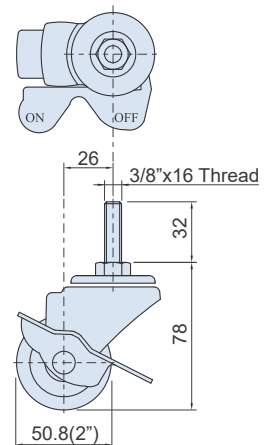
GP-B5-3



GP-B5-5



GP-B5-4 / GP-B5-5



特徵

- 輪架表面處理鍍鋅。
- 塑膠輪(聚丙烯輪 PP)。採高級耐衝擊塑膠原料製成塑膠輪，具抗潮濕、耐腐蝕、細屑不易侵入等優點，韌性與磨耗程度相較於尼龍輪稍低，但價格最為實惠。可應用於工作桌、倉儲物流設備、各式工作台車等用途。

FEATURES

- The housing is zinc plated.
- Polypropylene Wheel (PP). Use the high impact resistance material to product the plastic wheel. It is light weight and excellent in moisture and corrosion resistance. Also, the price is the most economical. It is suitable for most ground.

SPECIFICATION:

Unit:mm

產品編號 Item No.	輪架材質 Housing Material	輪子材質 Wheel Material	尺寸 Dimensions			荷重 Load Capacity (kgf/pc)	重量 Weight (kg)
			輪徑 Wheel Diameter	輪寬 Wheel Width	迴轉半徑 Radius of gyration		
GP-B5-1	鐵 Steel	塑膠 PP Plastic	50.8(2")	25.4	55	60	0.32
GP-B5-2					75		0.35
GP-B5-3					55		0.18
GP-B5-4					75		0.20
GP-B5-5					75		0.23